



Important Updates On Coronavirus and the Workplace

March 20, 2020

Presented by TechServe Alliance

Introduction >



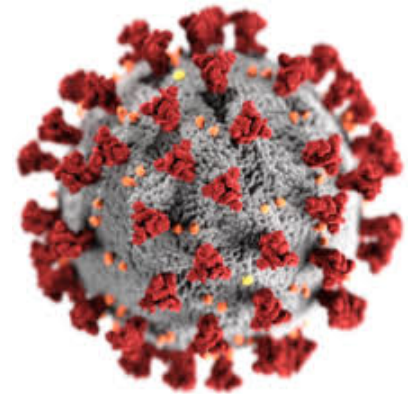
Agenda

- Coronavirus Basics
- Best Practices for Addressing Risks
- Families First Coronavirus Response Act
- Agency Guidance on Existing Workplace Laws

Coronavirus Basics >

› COVID-19

- Illness caused by a novel coronavirus (a new coronavirus that has not been previously identified)
- Symptoms: fever, cough, shortness of breath



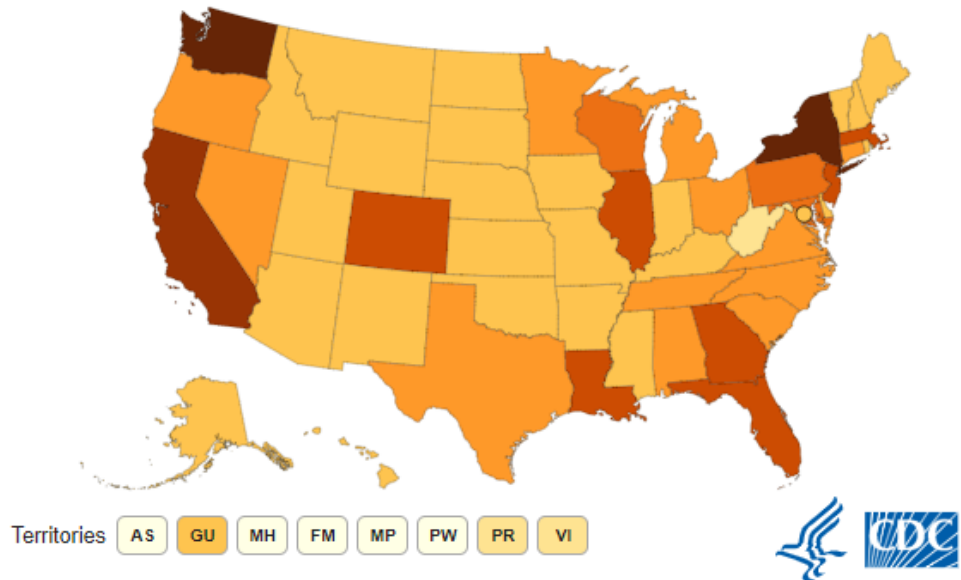
➤ Spread of COVID-19

United States

- Over 10,000 confirmed cases
- Cases in all 50 states and D.C.
- Community spread in multiple states

“Community spread”

- People have been infected with the virus in a specific geographic area



➤ How is COVID-19 diagnosed?

Do you have symptoms?

- Contact with sick person?
- Recent travel to area with known cases?

Contact healthcare provider if you have symptoms

- Doctor determines symptoms of COVID-19 and whether testing is required
- Higher risk individuals should contact their healthcare providers early

Current Treatment

- No vaccine or specific treatment yet
- Supportive care



Best Practices for Addressing Risks >

➤ Federal Guidelines



15 DAYS TO SLOW THE SPREAD

- Listen to and follow the directions of **STATE AND LOCAL AUTHORITIES**
- **IF YOU FEEL SICK**, stay home. Do not go to work. Contact your medical provider.
- **IF YOUR CHILDREN ARE SICK**, keep them at home. Do not send them to school. Contact your medical provider.
- **IF SOMEONE IN YOUR HOUSEHOLD HAS TESTED POSITIVE** for coronavirus, keep the entire household at home. Do not go to work. Do not go to school. Contact your medical provider.
- **IF YOU ARE AN OLDER PERSON**, stay home, and away from other people.
- **IF YOU ARE A PERSON WITH A SERIOUS UNDERLYING HEALTH CONDITION** that can put you at increased risk (for example, a condition that impairs your lung or function or weakens your immune system), stay home and away from other people.



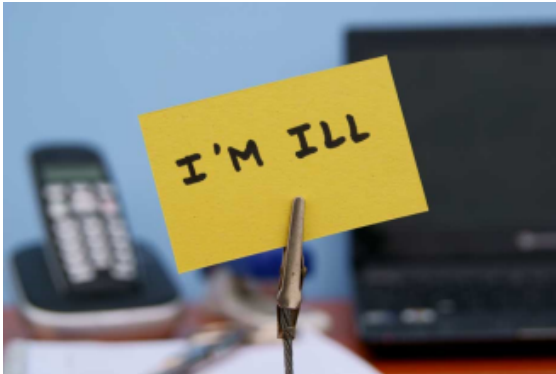
Federal Guidelines (cont.)



- Work or school **FROM HOME** whenever possible.
- **Critical infrastructure**
 - Defined by Department of Homeland Security (includes healthcare, pharmaceutical and food supply)
 - Maintain normal work schedule, follow CDC guidance
- **Avoid social gatherings** groups of more than **10 people**
- **Use drive-thru, pickup, or delivery options** Avoid eating in restaurants.
- **Avoid discretionary travel** overlapping trips, and social visits.
- **DO NOT VISIT** nursing homes or retirement or long-term care facilities unless to provide critical assistance.
- **Practice good hygiene**
 - Wash hands
 - Avoid touching your face
 - Sneeze or cough into a tissue or the side of your elbow
 - Disinfect frequently used items and surfaces

➤ Effects on the Workplace

Absenteeism



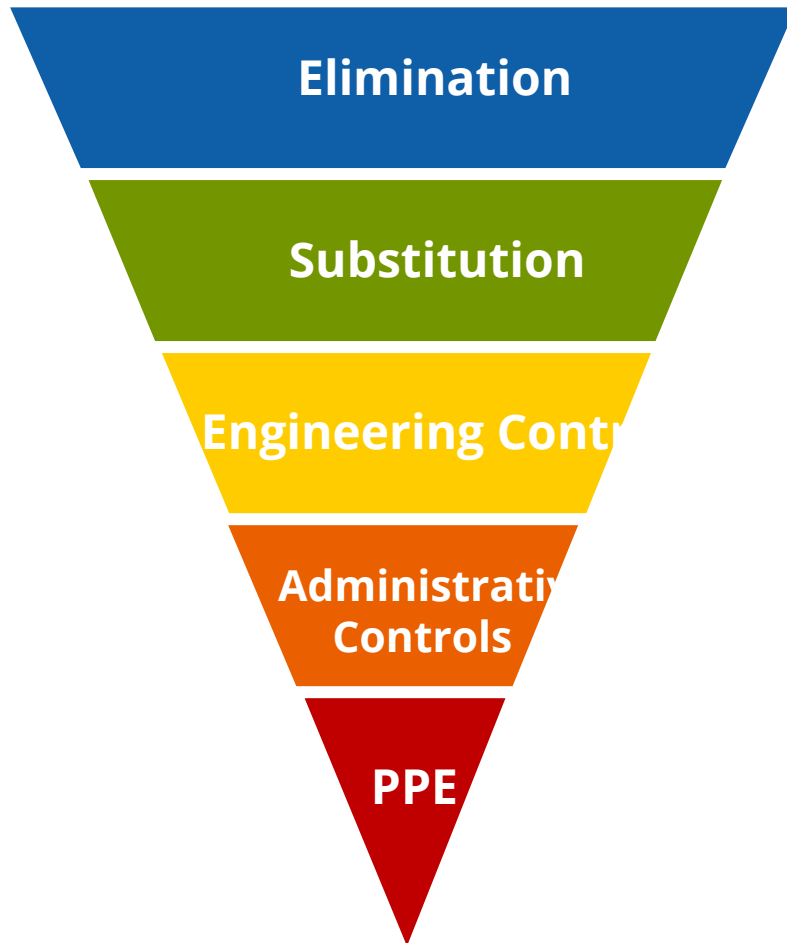
**Change in pattern
of commerce**



**Supply chain
disruption**

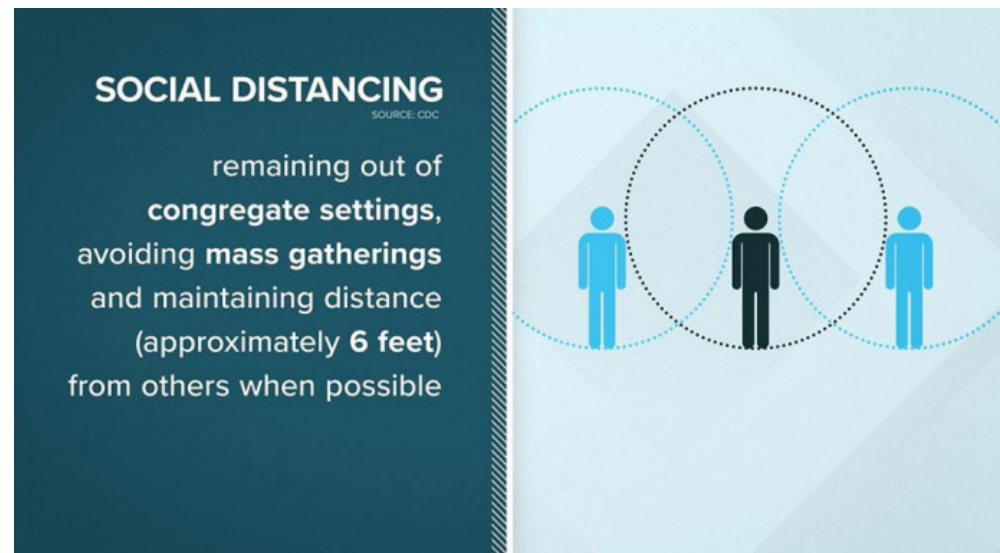


Administrative Controls



Goal: Change the way people work

- Promote awareness
- Manage behaviors
- Not as effective, but perhaps quicker to implement



Recommended Strategies you can use NOW

- Actively encourage sick employees to stay home
- Separate sick employees
- Emphasize good etiquette
 - Stay home if sick
 - Hand hygiene
 - Cough/sneeze into tissue or elbow
- Perform routine environmental cleaning
- Advise employees before traveling



➤ CDC Guidance (cont.)

Planning Considerations

- Objectives:
 - Reduce transmission
 - Protect people at higher risk
 - Maintain business operations
 - Minimize adverse effects in supply chain
- Key Considerations
 - Disease severity
 - Disease impact
 - Prepare for possible increased absenteeism
 - Local control for satellite offices and branches
 - Coordination with state and local health officials



CDC Recommendations



Infectious Disease Outbreak Response Plan

- Ensure the plan is flexible
- Involve employees in developing and reviewing the plan
- Ensure policies and practices conform to public health recommendations
- Share your plan with employees, explain policies and flexibilities
- Share best practices with other businesses in community
- Identify possible work-related exposure and health risks
- Explore whether you can establish flexible policies and practices (remote work, staggered shifts, increased employee distancing)
- Identify essential business functions, essential jobs or roles, and critical elements within your supply chains

➤ Recommendations (cont.)



- Set up authorities, triggers, and procedures for activating and terminating the company's infectious disease outbreak response plan
- Establish a process to communicate information to employees and business partners
- Consider canceling non-essential business travel (check government travel advisories)
- Learn about your community's outbreak response plan
- Determine how you will operate if absenteeism (sick employees, caring for sick family members, staying home to watch children dismissed from school)
- Engage with state and local health departments to confirm communication (information dissemination) channels

Families First Coronavirus Response Act



➤ Coronavirus Relief Bill



- Signed into law on March 18
- Contains several provisions to provide relief for effects of coronavirus situation
- Includes:
 - Funding for federal programs and unemployment compensation
 - Emergency paid sick leave
 - Expanded FMLA rights
 - Coverage for COVID-19 testing
 - Tax credits for employers that provide required leave (including self-employed individuals)

➤ Emergency Paid Sick Leave

- Covered employers must provide paid sick time when an employee is unable to work (or telework) due to COVID-19
- Effective April 2 (or sooner?) through Dec. 31, 2020



➤ Definitions

Covered employer government agency of any size or person engaged in/affecting commerce who employs fewer than 500 employees

Employee government employee or as defined by FLSA

- Regardless of length of employment

Exemptions:

- Regulations may exempt medical providers, emergency responders and small businesses with fewer than 50 EEs
- Employers can choose to exempt medical provider and emergency responder employees

Reasons for Paid Sick Leave

- The employee has been ordered or medically advised to self-quarantine or isolate due to COVID-19 (or is caring for someone who has)
- The employee is experiencing symptoms of COVID-19 and seeking a medical diagnosis
- The employee is caring for his or her minor child if the school or child care is unavailable due to COVID-19



➤ Duration of Paid Sick Leave

- **Full-time employees:** 80 hours
- **Part-time employees:** number of hours the employee works over a 2-week period (on average)

Sick time does not carry over from one year to the next

➤ Required Compensation



- Based on regular rate of pay, federal minimum wage or state/local minimum wage (whichever is higher)
 - 100% of pay if employee is sick or quarantined/isolated (up to \$511/day and \$5,110 aggregate)
 - 2/3 of pay if employee is caring for a family member (up to \$200/day and \$2,000 aggregate)
- DOL to issue guidelines on calculating pay

➤ Other Paid Sick Leave Rules

- **Employer may not:**
 - Require EE to search for/find a replacement EE for leave period
 - Require EE to use other paid leave first
 - Retaliate against EE for using leave
- **Employer may:**
 - Require EE to follow reasonable notice procedures after first day of leave

➤ Other Paid Sick Leave Rules

- Employer must post and keep posted a notice of the paid sick leave requirements
 - In conspicuous places on the premises of the employer where notices to employees are customarily posted
 - DOL will issue a model notice
- Special rules apply to collectively bargained employees
- Unused paid sick leave does not have to be paid out at termination

➤ Expanded FMLA

- Requires partially paid FMLA leave for eligible employees who cannot work due to closure of school or child care
- Expands definitions of eligible employee and covered employer
- Effective April 2 (or sooner?) through Dec. 31, 2020



➤ Expanded FMLA - Definitions

- **Eligible employee:** employee who has been employed for 30+ calendar days
- **Covered employer:** person engaged in/affecting commerce who employs fewer than 500 employees
- Exemptions:
 - Regulations may exempt medical providers, emergency responders and small businesses with fewer than 50 EEs
 - Employers can choose to exempt medical provider and emergency responder employees

➤ Expanded FMLA - Definitions

- **Qualifying need related to a public health emergency:** employee is unable to work (or telework) due to a need to care for his or her minor child if the school or child care provider is unavailable due to a public health emergency
- **Public health emergency:** emergency with respect to COVID-19 declared by a Federal, State or local authority

➤ Expanded FMLA - Paid Leave

- The first 10 days of expanded FMLA leave may be unpaid
 - An employee may elect to substitute any accrued vacation leave, personal leave, or medical or sick leave for unpaid leave
- Paid leave must be provided after 10 days
 - At least 2/3 of the employee's regular rate based on normally scheduled hours
 - Pay capped at \$200/day and \$10,000 overall

➤ Expanded FMLA – Other Provisions

- Employee must provide notice of leave “as is practicable”
- FMLA restoration rights do not apply to employers with fewer than 25 employees if conditions are met
- Special rules for collectively bargained employees

COVID-19 Testing



- Group health plans and health insurance issuers **must cover COVID-19 testing**
- Plans and issuers may not impose:
 - Cost sharing (such as deductibles, copayments or coinsurance)
 - Prior authorization or other medical management requirements
- Applies to all group and individual plans or policies
- Testing also covered under government health programs

➤ Unemployment Compensation

- The Act provides federal funds to help states pay for increased UI claims caused by the outbreak
- The Act encourages states to waive limitations on UI benefits for COVID-19-related claims.
- Other DOL guidance says states may allow UI benefits in non-standard situations



Agency Guidance on Existing Workplace Laws >

➤ Affected OSHA Standards

- General Duty Clause
- Illness Reporting and Recording
- Personal Protective Equipment
- Toxic and Hazardous Substances
- Environmental Controls – Sanitation



➤ Work-related Incidents (OSHA)

An incident is presumed to be work-related if it results from events or exposure that occur in the **work environment** and the work environment

Caused or
contributed to the
resulting condition

OR

Significantly
aggravated a pre-
existing injury or
illness

➤ Remote Work – Wages (DOL)

- FLSA generally applies to hours actually worked
 - Exempt salaried employees must receive their salary each week
- Employers can require/encourage employees to telework
 - Do not single out employees for working at/away from office
 - Salary/compensation remains the same
 - Beware of overtime work caused by remote access

When not all employees can work from home, the DOL encourages social distancing (e.g., staggered work shifts)



➤ Transportation Industry (FMCSA)

- March 13 – Emergency exemption
 - Drivers directly assisting in relief efforts
 - Waiver from hours of service regulations
- Direct assistance (expanded March 18)
 - Medical supplies, equipment, patients and personnel
 - Supplies and equipment for community safety, sanitation, and prevention
 - Food, paper products, and other groceries for emergency restocking
 - Raw materials for the manufacture of essential items;
 - Fuel



➤ Workers' Compensation

- Generally governed by State law
- Usually cover only if infection work-related
- States relaxing rules for
 - Healthcare workers
 - Emergency responders





ADA: EEOC Pandemic Publication and FAQs

- The ADA normally prohibits asking employees or applicants for medical information
- During a pandemic, different rules apply
 - Employers may ask employees and applicants for information on symptoms
 - Employers can require sick employees to stay home or provide fitness for duty information
 - Employers may delay start dates or withdraw offers if they need an applicant to start immediately
- Must keep employee information private

FMLA

- **COVID-19 or Other Public Health Emergencies and the FMLA Q&As**
- Applies prior pandemic influenza guidance to COVID-19
- Employees may be entitled to FMLA leave if they or a family member are sick
- Leave taken to avoid exposure would not be protected under the FMLA
- Standard FMLA rules apply in most situations
- Employers should consider flexible leave policies for their employees



HIPAA Privacy and Security



- **HHS Bulletin: HIPAA Privacy and Novel Coronavirus issued February 2020**
- Reiterates that the Privacy Rule still applies during a pandemic or emergency situation
- Privacy Rule applies to covered entities and business associates
- PHI can be shared for specific reasons under the Privacy Rule under existing rules
- Most information employers have is not PHI
- Must apply technical safeguards under Security Rule

➤ Disclosure of PHI

- Permissible disclosures:
 - For treatment
 - Public health activities
 - To people involved in an individual's care and for notification
 - To prevent a serious and imminent threat
- Disclosures to the media or others not involved in the care of the patient or notification are generally prohibited
- Most disclosures must be "minimum necessary information"

➤ ACA – Essential Health Benefits

- **CMS FAQs issued March 12**
- EHB generally includes coverage for the diagnosis and treatment of COVID-19
 - Exact coverage details and cost-sharing amounts for individual services may vary
- EHB includes quarantine/isolation in a hospital (not at home)
- Any future COVID-19 vaccine would be covered as EHB if recommended CDC
 - Required to be covered beginning with plan year that is 12 months after recommendation issued
 - Plans can cover sooner

➤ HDHPs and COVID-19 Costs

- **IRS Notice 2020-15 issued March 11**
- HDHPs can pay for COVID-19 testing and treatment before plan deductible is met
- These plans remain HSA compatible
- Future COVID-19 vaccine costs
 - Count as preventive care
 - Can be paid for by an HDHP without cost sharing

➤ Federal WARN Act



- Covered employers must provide **60 days' advance notice** of imminent covered plant closings and mass layoffs
- Applies to employers with 100 or more employees
- Some states have their own requirements
 - May apply to more employers
 - NJ will require severance pay (July 2020)

➤ Health Plan Coverage

- ERISA plans must be administered in accordance with their terms
- Maintenance of benefits during leave will depend on the situation
- COBRA or state continuation coverage may be available for employees who lose coverage due to job loss or reduction in hours of employment

Questions? >

Thank You!

This presentation is current as of the date presented and is for informational purposes only. It is not intended to be exhaustive nor should any discussion or opinions be construed as legal advice. Please contact legal counsel for legal advice on specific situations. This presentation may not be duplicated or redistributed without permission. © 2020 Zywave, Inc. All rights reserved.